

DNA Ligation in 5 Minutes!

At room temperature

Lab Tested ...
Scientist Approved.

Visit www.biowire.com and search for "Fast-Link" to view comments from users of EPICENTRE's Fast-Link DNA Ligation Kits.

EPICENTRE's Fast-Link™ DNA Ligation kits are specially formulated to provide fast and efficient DNA ligations in as little as 5 minutes at room temperature for both routine and high throughput cloning.

Fast and Efficient DNA Ligations.

- Ligate cohesive-end DNA in 5 minutes at room temperature.
- Ligate blunt-end DNA in 15 minutes at room temperature.
- Ligate PCR product with A-overhangs in 1 hour or less at 16°C.

Transform Cells Without Desalting the Ligation Reaction.

Desalting the Fast-Link DNA ligation reaction prior to transformation of electrocompetent or chemically competent cells is not necessary. Aliquots (1-2 µl) of a Fast-Link ligation reaction may be used directly in electroporation.

Representative Transformation Results with the Fast-Link DNA Ligation Kit*

	Ligation Time	% White Colonies	Recombinants per µg DNA
Cohesive ends	5 min.	>90%	2.0 x 10 ⁶
Blunt ends	15 min.	>95%	5.0 x 10 ⁵

* Cohesive-end ligation results were obtained by ligating *Hind* III-digested *E. coli* chromosomal DNA into EPICENTRE's pIndigoBAC-5 (*Hind* III Cloning-Ready) BAC vector. Blunt-end ligation results were obtained by ligating a 1.2 Kb blunt-ended fragment into a blunt-end dephosphorylated pUC-based plasmid vector. One microliter from each ligation reaction was used to transform TransforMax™ EC100™ Electrocompetent *E. coli*.

Ligation Time in Minutes

5 15 30 60 120

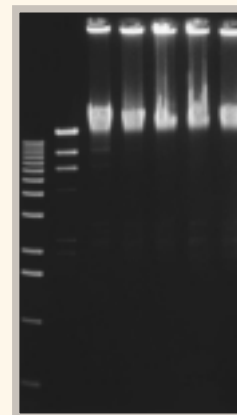


Figure 1. Time course for cohesive-end ligation using the Fast-Link™ DNA Ligation Kit. Lambda *Hind* III markers were ligated in a standard Fast-Link reaction using 2 U of Fast-Link DNA Ligase (Lanes 3-7). Lane 1, 1 Kb ladder; Lane 2, no enzyme.

www.epicentre.com/fastlink.asp

Fast-Link™ DNA Ligation Kits

LK11025	25 ligations
LK0750H	50 ligations
LK6201H	100 ligations

Includes Fast-Link™ DNA Ligase, Fast-Link™ 10X Ligation Buffer, and ATP.

HOW TO CONTACT US AT EPICENTRE

Toll-free in the USA: **800-284-8474**
Tel: 608-258-3080 Fax: 608-258-3088
Web site: www.epicentre.com E-mail: techhelp@epicentre.com
Outside the USA: contact your local EPICENTRE Distributor.

EPICENTRE FORUM

Editors MERRIANN CAREY
JIM PEASE
Graphic Designer BRENDA HOUSE
Additional Illustrations RON MEIS

© 2002 EPICENTRE All rights reserved. Publication date: March, 2002. Printed in USA.

EPICENTRE is a registered trademark and EZ::TN, AmpliScribe, FailSafe, MasterPure, MasterAmp, RetroAmp, pMOD, Transposome, SequiTherm, Plasmid-Safe, HK, EpiFOS, Fast-Screen, TransforMax, AmpliCap, Fast-Link, BuccalAmp, Catch-All, QuickExtract, End-It, MaxiPlax, EPI300, pCC1, pCC1FOS, pCC1BAC, BAC-Tracker, CopyControl, DuraScribe, and DuraScript are trademarks of EPICENTRE Technologies. EPICENTRE's EZ::TN Transposomes and related products are accompanied by a limited non-exclusive license for the purchaser to use the purchased product(s) solely for life science research. No license for any other field of use or immunity under any patent covering any other use is either granted or implied by the sale of the product. Product prices and specifications subject to change without notice.

