

Screen Your BAC Clones in 3 Hours and Plasmid Clones in 1 Hour Without Minipreps and Restriction Digests Using the Colony Fast-Screen™ Kit

Save days in screening your BAC library without the need to grow cultures, perform minipreps and restriction endonuclease (e.g. *Not I*) digestions using the Colony Fast-Screen™ Kit. The process for using the Colony Fast-Screen Kit for screening BAC clones is shown in Figure 1. Plasmid clones can be screened in 1 hour or less with a slight modification to the BAC screening procedure.

The Colony Fast-Screen Kit is:

- **Fast.** Screen BAC clones in 3 hours. Screen plasmid clones in 1 hour or less.
- **Sensitive.** Even low copy clones (e.g. BAC and Fosmid clones) are readily detected without the need to grow cultures.
- **High Through-put Capability.** Amenable to 96-well microtiter format.
- **Efficient.** Estimate the size of cloned inserts without the need to grow cultures or restriction endonuclease digests.

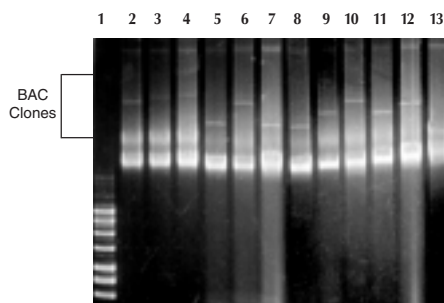


Figure 2. The size of a BAC clone can be estimated in 3 hours using the Colony Fast-Screen™ Kit.

Randomly chosen BAC clones were picked from an overnight plate and individually processed using the Colony Fast-Screen Kit. 25 µl aliquots of each processed clone were loaded on a 0.8% agarose gel in 1X TAE. The gel was run at 5V/cm for 3 hours at 4°C and then stained using SYBR® Gold. Lane 1, Supercoiled DNA ladder; Lane 2, 100 Kb BAC clone control; Lane 3, 150 Kb BAC clone control; Lane 4, 200 Kb BAC clone control; Lanes 5-12, randomly chosen BAC clones; Lane 13, vector clone (pIndigoBAC-5).

Colony Fast-Screen™ Kit

FS08250-F83 1 Kit
Reagents sufficient for screening 250 colonies.

SYBR® is a registered trademark of Molecular Probes, Inc.

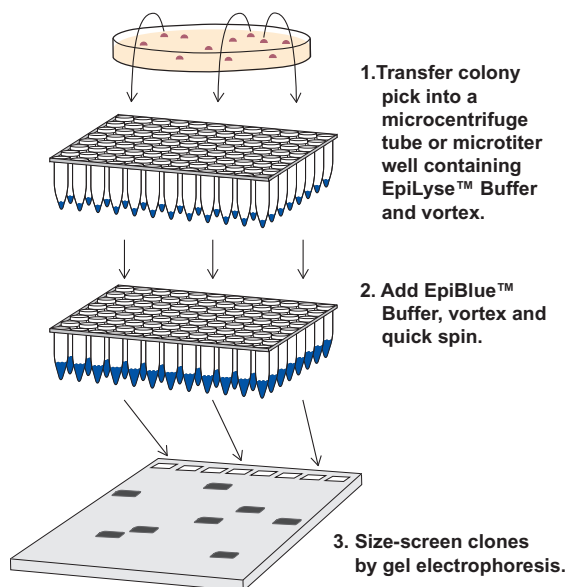


Figure 1. BAC clones can be screened in 3 hours using the Colony Fast Screen™ Kit. Plasmid clones can be screened in 1 hour or less.