

**Figure 1. PCR amplification of the CaMV 35S promoter (upper gel) and NOS terminator sequences (lower gel) using genomic DNA isolated with the MasterPure™ DNA Purification Kit.** Sources of DNA included Certified Reference Material soybean powder (Lane 1), commercial cornmeal (Lane 2), soy milk W (Lane 3), soy milk E (Lane 4), soy protein (Lane 5), tofu (Lane 6), soy hot dog (Lane 7), and corn curls (Lane 8). Negative control (Lane 9); M, DNA Ladder.

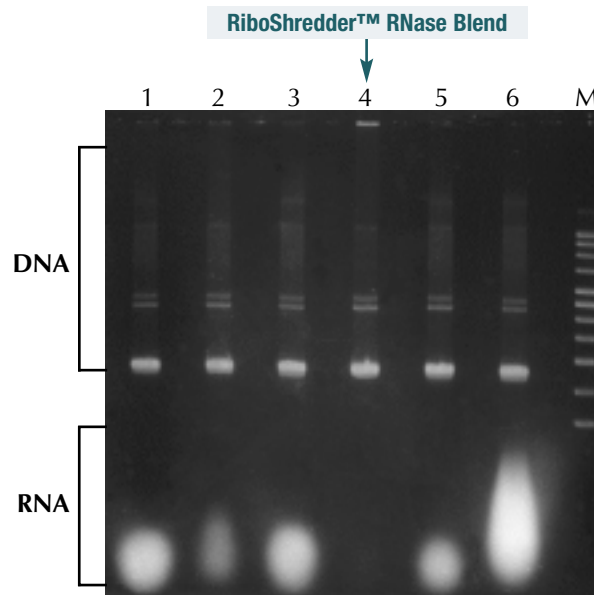


## RiboShredder™ RNase Blend Destroys Unwanted RNA Quickly and Efficiently

EPICENTRE's RiboShredder™ is a proprietary blend of potent non-mammalian RNases that completely degrades unwanted RNA in DNA and protein purification procedures. Unlike other RNase cocktails, RiboShredder RNase completely degrades all RNA (Figure 1). RiboShredder RNase Blend uses recombinant, highly purified ribonucleases and thus does not require boiling to remove unwanted DNase activities prior to use.

### Benefits

- Quickly and completely degrades RNA (Figure 1).
- Highly purified, cloned non-mammalian enzyme blend is free of contaminating DNases and proteases.



**Figure 1. RiboShredder completely degrades RNA in DNA purification procedures.** Nucleic acids from a standard alkaline lysis plasmid prep were treated with RiboShredder RNase individual RNases or other commercially available RNase mixtures. Lane 1, RNase A; Lane 2, RNase I; Lane 3, RNase T1, Lane 4, RiboShredder RNase Blend; Lane 5, RNase A/RNase T1 cocktail; Lane 6, Untreated alkaline lysis plasmid preparation M, Supercoiled DNA ladder.

### RiboShredder™ RNase Blend

RS12100	100 Units
RS12500	500 Units