

Figure 4. The location of the 19-amino acid insertion into eight independent β-galactosidase insertion derivatives. The designated amino acid is immediately N-terminal to the point of insertion. The domain structure of β-galactosidase is adapted from Jacobson *et al.*, (1994) *Nature* 369:761.

EZ::TN™ In-Frame Linker Insertion Kit
 EZI04KN 10 Reactions

TransforMax™ EC100™ Electrocompetent E. coli
 Highest efficiency electrocompetent cells available. See center insert for more information.

EC10005	5 X 100 µl (10 electroporations)
EC10010	10 X 100 µl (20 electroporations)

Finish your DNA Sequencing Project

Complete Difficult Regions with *SequiTherm EXCEL™ II DNA Sequencing Kits*

Sequence through hairpin loops, regions of high GC or AT content, areas of inter-strand reannealing, and inverted or direct repeats. Using end-labeled primers, *SequiTherm EXCEL II DNA Sequencing Kits* provide complete, clear sequencing data when all other methods fail.

*"I know of no other sequencing method that resolves GC compressions better than **SequiTherm EXCEL™ II.**"*

- Glenn Dawes, Affymax Research Institute, *The Scientist*, Vol.12, #6, 1998, pg. 13

SequiTherm EXCEL II resolved a "2-year-old puzzle" due to "an unreadable hairpin loop" for the Washington University genome center.

- Science, Vol. 280, 8 May 1998, pg. 816

Benefits

- Complete work on most any difficult gap to finish your sequencing project.
- High flexibility - you can perform both cycle and isothermal sequencing with one kit.
- Kits compatible with LI-COR® and ALF™ DNA Sequencers (both dye-primer and internal label) and with ABI™ automated sequencers (dye-primer).
- Reduced background signal.

G A T C

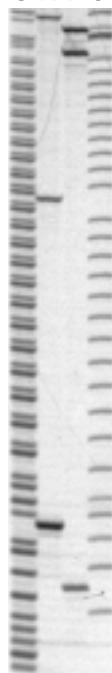


Figure. Sequencing through a GC-rich trinucleotide repeat. Supercoiled plasmid template containing (CGG)₂₃ was sequenced using the *SequiTherm EXCEL II* isothermal sequencing protocol.

SequiTherm EXCEL™ II DNA Sequencing Kit - LC For 25-41 cm gels on LI-COR® Sequencers

SE9101LC (100 Sequences)

SequiTherm EXCEL™ II DNA Sequencing Kit - LC For 66 cm gels on LI-COR® Sequencers

SE9202LC (100 Sequences)

SequiTherm EXCEL™ II Long-Read™ DNA Sequencing Kit - ALF™

For ALF DNA Sequencers
 SE8301A (100 Sequences)

SequiTherm EXCEL™ II DNA Sequencing Kit

(for manual cycle and non-cycle sequencing)

SEM79020	20 Sequences
SEM79050	50 Sequences
SEM79100	100 Sequences