

DNA Ligation in 5 Minutes

Then ...

Screen Your Clones in 1 Hour Using the Colony Fast-Screen™ Kit

EPICENTRE's Fast-Link™ DNA Ligation kits are specially formulated to provide the fastest ligation of DNA with either blunt or cohesive ends, including PCR products with 3'-A overhangs, for both routine and high throughput cloning.

Fast and Efficient DNA Ligations

- Ligate cohesive-end DNA in 5 minutes at room temperature and get >90% white colonies.
- Ligate blunt-end DNA in 15 minutes at room temperature and get >95% white colonies.
- Ligate PCR products with 3'-A overhangs in 1 hour or less at 16°C.

Transform Cells Without Desalting the Ligation Reaction

Desalting the Fast-Link ligation reaction prior to electroporation of competent cells is not necessary. Aliquots (1 - 2 µl) of a Fast-Link ligation reaction may be used directly in electroporation.

Lab Tested...Scientist-approved

Visit www.biowire.com and search for "Fast-Link" to view comments from users of EPICENTRE's Fast-Link DNA Ligation Kit.

The Colony Fast-Screen™ Kit provides a rapid and highly sensitive method for size screening of plasmid, cosmid and Bacterial Artificial Chromosome (BAC) clones without the need to grow cultures or perform minipreps. Using the Colony Fast-Screen Kit, the size of cloned inserts can be determined in about 1 hour.

The protocol for using the Colony Fast-Screen process, which is amenable to both high throughput and routine cloning applications, is described in Figure 1. First, small amounts of individual colonies are randomly picked from plates and placed in centrifuge tubes or into the wells of a microtiter plate. Cells are resuspended in EpiBlue™ Buffer and the DNA contained in each clone is released from the cells by addition of EpiLyse™ Buffer. Finally, the size of the cloned insert is determined by loading aliquots from each tube or well into the well of an agarose gel followed by gel electrophoresis and DNA staining (e.g., Figure 2).

Fast-Link™ DNA Ligation Kits and the Colony Fast-Screen™ Kit are sold individually or together in the Fast-Link™ DNA Ligation and Screening Kits.

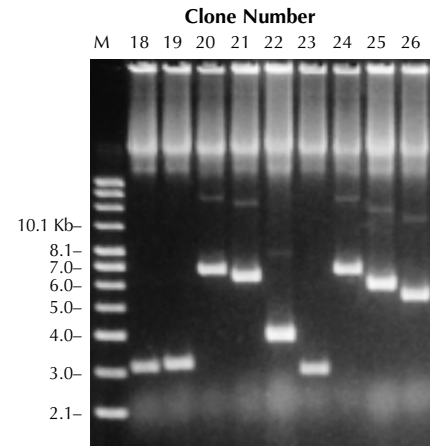
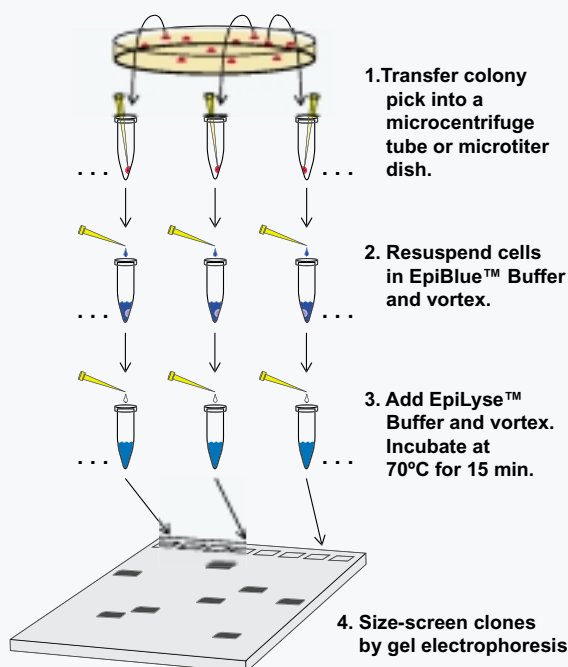


Figure 2. Agarose gel size analysis of 9 plasmid deletion clones. A 4.7 Kb DNA insert was ligated into EPICENTRE's pPDM™-1 Plasmid Deletion Vector to produce a 8.2 Kb recombinant clone. Random, unidirectional deletions were generated in the clone by addition of EZ::TN™ Transposase. Nine deletion clones were randomly chosen from the selection plate and the size of each determined using the Colony Fast-Screen™ Kit.

Figure 1. Plasmid clones can be screened in 1 hour using the Colony Fast-Screen™ Kit.



Fast-Link™ DNA Ligation Kits

LK0750H	50 ligations
LK6201H	100 ligations

Contents:

Fast-Link™ DNA Ligase, Fast-Link™ 10X Ligation Buffer, ATP

NEW Colony Fast-Screen™ Kit

FS08250	1 kit
Reagents for screening 250 colonies.	

Contents:

EpiBlue™ Buffer, EpiLyse™ Buffer

Fast-Link™ DNA Ligation Screening Kits

LK08050	1 kit
Reagents sufficient to perform 50 ligations and screen 250 colonies.	

LK08100	1 kit
Reagents sufficient to perform 100 ligations and screen 500 colonies.	

Contents

Fast-Link™ DNA Ligase, Fast-Link™ 10X Ligation Buffer, 10 mM ATP, EpiBlue™ Buffer, EpiLyse™ Buffer