

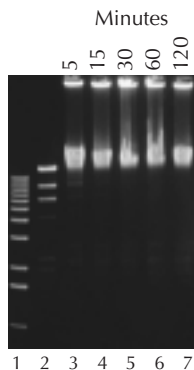
# 10 Reasons Why DNA Cloning Kits from EPICENTRE Enable the Fastest and Most Reliable Results

EPICENTRE's highly specialized kits enable the fastest and most efficient procedures for DNA cloning, allowing you to move forward quickly and reliably with your research.

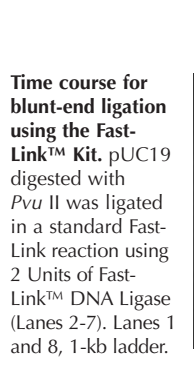
## Fast-Link™ DNA Ligation Kit

Lab Tested...Scientist Approved. Visit [www.biowire.com](http://www.biowire.com) and search for "Fast-Link" to view users' comments.

1. Get cohesive-end DNA ligations in 5 minutes at room temperature.
2. Ligate blunt-ended DNA in as little as 5 minutes at room temperature.
3. Perform T/A ligations in 1 hour.
4. No need to desalt the reaction mixture prior to cell transformation.



**Time course for cohesive-end ligation using the Fast-Link™ Kit.** Lambda Hind III markers were ligated in a standard Fast-Link reaction using 2 Units of Fast-Link™ DNA Ligase (Lanes 3-7). Lane 1, 1-kb ladder; Lane 2, no enzyme.



**Time course for blunt-end ligation using the Fast-Link™ Kit.** pUC19 digested with Pvu II was ligated in a standard Fast-Link reaction using 2 Units of Fast-Link™ DNA Ligase (Lanes 2-7). Lanes 1 and 8, 1-kb ladder.

## TransforMax™ EC100™ Competent Cells

The best value in competent cells. Compare our prices and efficiencies.

5. Transformation efficiency  $>10^{10}$  cfu/ $\mu$ g DNA with electrocompetent cells.
6. Readily take up large DNA clones for construction of cDNA and BAC libraries.
7. Protect cells and valuable clones from destruction with Phage T1-Resistant *E. coli*.

DNA	TransforMax™ EC100™ Electrocompetent <i>E. coli</i>
pUC19	$2.7 \times 10^{10}$
13.1-kb Clone	$1.3 \times 10^9$
23.1-kb Clone	$3.0 \times 10^8$
153-kb BAC Clone	$7 \times 10^7$
13.1-kb clone directly from a ligation reaction	$2.1 \times 10^7$

**Comparison of the transformation efficiency of TransforMax™ EC100™ Electrocompetent *E. coli* with a variety of DNAs.** Results shown are in cfu/ $\mu$ g of DNA and are the average transformation efficiencies obtained from several trials.

[www.epicentre.com/ec100.asp](http://www.epicentre.com/ec100.asp)

### TransforMax™ EC100™ Chemically Competent *E. coli*

CC02810 10 X 50  $\mu$ l

### TransforMax™ EC100™ Electrocompetent *E. coli*

EC10005 5 X 100  $\mu$ l  
EC10010 10 X 100  $\mu$ l  
Transformation efficiency  $>5 \times 10^9$  cfu/ $\mu$ g.

[www.epicentre.com/ec100t1r.asp](http://www.epicentre.com/ec100t1r.asp)

### TransforMax™ EC100™-T1<sup>R</sup> Chemically Competent *E. coli*

CCT10210 10 X 50  $\mu$ l  
Includes pUC19 control DNA.

### TransforMax™ EC100™-T1<sup>R</sup> Electrocompetent *E. coli*

EC0205T1 5 X 100  $\mu$ l  
EC0210T1 10 X 100  $\mu$ l  
Includes pUC19 control DNA.

## Colony Fast-Screen™ Kits

Two sensitive and easy-to-use kits for high throughput or routine screening of clones and libraries.

8. Rapidly screen the size of cloned PCR inserts and cDNA in 1 hour and BAC clones in 4 hours. Prepare PCR-ready DNA directly from clones in less than 10 minutes.
9. Use with any plasmid cloning vector and all *E. coli* host strains.
10. No need to grow cultures, isolate DNA or perform endonuclease digestions.

### How the Colony Fast-Screen™ Kits Work

#### Colony Fast-Screen™ Kit (Size Screen)

1. Pick colony into tube or microtiter well.

2. Add EpiLyse™ Solution, vortex, and quick spin.

3. Gel electrophoresis and staining.

#### Colony Fast-Screen™ Kit (PCR Screen)

1. Pick colony into tube or microtiter well.

2. Add PCR-Lyse™ Solution, vortex, and heat 5'.

3. Perform PCR.

4. Gel electrophoresis and staining.

[www.epicentre.com/fastscreen.asp](http://www.epicentre.com/fastscreen.asp)

### Colony Fast-Screen™ Kit (Size Screen)

Rapidly screen the size of cloned inserts.  
FS08250 1 Kit  
Sufficient reagents to screen 250 colonies.

#### Contents:

EpiLyse™ Solution and EpiBlue™ Solution.

### Colony Fast-Screen™ Kit (PCR Screen)

Rapidly prepare clones for screening by PCR.  
FS0322H 1 Kit  
Sufficient reagents to screen 200 colonies. Thermostable polymerase and PCR primers are not included.

#### Contents:

PCRLyse™ Solution and Gel Loading Solution.

[www.epicentre.com/fastlink.asp](http://www.epicentre.com/fastlink.asp)

### Fast-Link™ DNA Ligation Kit

LK11025 25 Ligations  
LK0750H 50 Ligations  
LK6201H 100 Ligations

#### Contents:

Fast-Link™ DNA Ligase, Fast-Link™ 10X Ligation Buffer, and 10 mM ATP.